



chadster766

(/t5/user/viewprofilepage/user-id/472372)
Expert



(/t5/user/viewprofilepage/user-id/472372)
Posts: 14,296
Registered: 01-18-2013

✓ Re: LRT224 with IPSEC Problem - Not
12-08-2014 12:26 AM

I did some testing and think this is awesome. With this feature you can have an addition 45 VPN tunnels as you mention. I tested with two devices connected at the same time though different IPSec tunnels and both were able to ping devices on the remote LAN.

Equipment used:

1. LRT224
2. Windows 7 x64 Desktop
3. HP Stream 7 Tablet
4. LAPN300
5. Galaxy S4

VPN Client:

1. Shew Soft VPN Client for Windows (<https://www.shrew.net/download>)
2. Shew how to instructions (https://www.shrew.net/support/Howto_Linksys)

LRT224 VPN Client to Gateway Configuration:

The screenshot shows the configuration page for the Linksys LRT224 Dual WAN Gigabit VPN Router, specifically the 'Client To Gateway' section. The page is divided into several sections:

- Client To Gateway:** Includes options for Tunnel or Group VPN, Group No. (1), Tunnel Name (VPNConcentrator), Interface (WAN1), and an Enable checkbox.
- LOCAL GROUP SETUP:** Includes Local Security Group Type (Subnet), IP Address (192.168.1.0), and Subnet Mask (255.255.255.0).
- REMOTE CLIENT SETUP:** Includes Remote Client (Domain Name: P2DN), and Domain Name (shrew.net).
- IPSEC SETUP:** Includes Keying Mode (IKE with Preshared key), Phase 1 and 2 configurations (DH Group, Encryption, Authentication, SA Life Time), Perfect Forward Secrecy, and Preshared Key (guncan1234).
- ADVANCED:** Includes checkboxes for Aggressive Mode, Compress, Keep-Alive, AH Hash Algorithm (MD5), NetBIOS Broadcast, and NAT Traversal.

Buttons for 'Save' and 'Cancel' are located at the bottom of the configuration page.

Shew VPN Client Configuration:

VPN Site Configuration

General Client Name Resolution Authentication

Firewall Options

NAT Traversal enable

NAT Traversal Port 4500

Keep-alive packet rate 15 Secs

IKE Fragmentation enable

Maximum packet size 540 Bytes

Other Options

Enable Dead Peer Detection

Enable ISAKMP Failure Notifications

Enable Client Login Banner

Save Cancel

VPN Site Configuration

General Client Name Resolution Authentication

DNS WINS

Enable WINS Obtain Automatically

Server Address #1 . . .

Server Address #2 . . .

Save Cancel

VPN Site Configuration

Client Name Resolution Authentication Phase

Authentication Method Mutual PSK

Local Identity Remote Identity Credentials

Identification Type IP Address

Address String

Use a discovered remote host address

Save Cancel

VPN Site Configuration

Authentication Phase 1 Phase 2 Policy

Proposal Parameters

Exchange Type aggressive

DH Exchange group 2

Cipher Algorithm aes

Cipher Key Length 256 Bits

Hash Algorithm sha1

Key Life Time limit 28800 Secs

Key Life Data limit 0 Kbytes

Enable Check Point Compatible Vendor ID

Save Cancel

VPN Site Configuration

Authentication Phase 1 Phase 2 Policy

IPSEC Policy Configuration

Policy Generation Level auto

Maintain Persistent Security Associations

Obtain Topology Automatically or Tunnel All

Remote Network Resource

↔ 192.168.1.0 / 255.255.255.0

Add Modify Delete

Save Cancel

VPN Site Configuration

Authentication Phase 1 Phase 2 Policy

Proposal Parameters

Transform Algorithm esp-aes

Transform Key Length 256 Bits

HMAC Algorithm sha1

PFS Exchange group 2

Compress Algorithm disabled

Key Life Time limit 3600 Secs

Key Life Data limit 0 Kbytes

Save Cancel

VPN Site Configuration

Client | Name Resolution | Authentication | Phase

Authentication Method: Mutual PSK

Local Identity | Remote Identity | Credentials

Server Certificate Authority File:

Client Certificate File:

Client Private Key File:

Pre Shared Key:

Save Cancel

VPN Site Configuration

Client | Name Resolution | Authentication | Phase

Authentication Method: Mutual PSK

Local Identity | Remote Identity | Credentials

Identification Type: Fully Qualified Domain Name

FQDN String: shrew.net

Save Cancel

VPN Site Configuration

General | Client | Name Resolution | Authentication

DNS | WINS

Enable DNS Obtain Automatically

Server Address #1: 192.168.1.1

Server Address #2: . . .

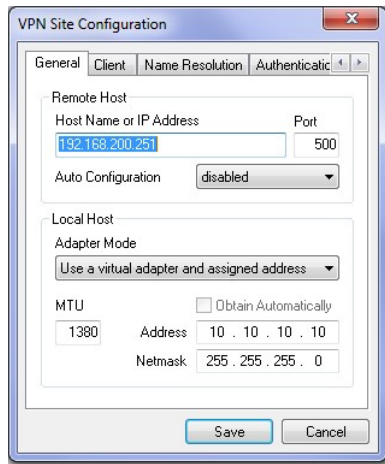
Server Address #3: . . .

Server Address #4: . . .

Obtain Automatically

DNS Suffix: local

Save Cancel



😊 Please remember to Kudo those that help you.

Linksys
Communities Technical Support

ME TOO ([HTTPS://COMMUNITY.LINKSYS.COM/T5/FORUMS/FORUMTOPICPRINTPAGE.EXTERNALRATINGDISPLAY.RATINGENUMERATIONDISPLAY.LINK:RATING/RATING-ENUM/0/RATING-SYSTEM/FORUM_SOI](https://community.linksys.com/t5/forums/forumtopicprintpage.externalratingdisplay.ratingenumerationdisplay.link:rating/rating-enum/0/rating-system/forum_soi))

(15,791 Views)

powered by **Lithium** (<https://www.lithium.com/powered-by-lithium>)